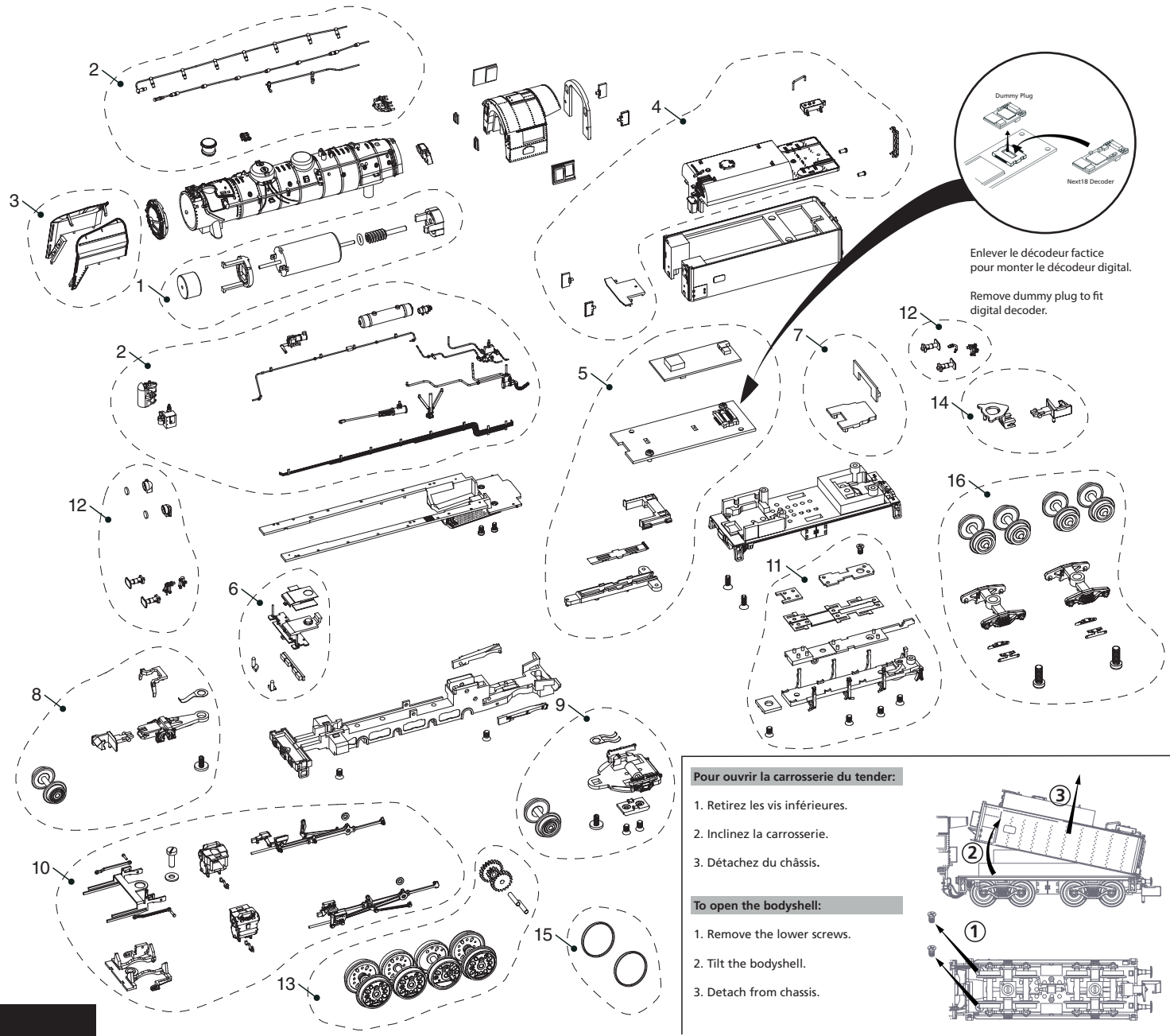


## PIECES DE RECHANGE / LIST OF SPARES

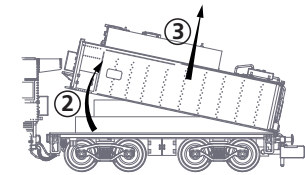
| Número<br>Number | Description<br>Description  |                                      | Réf. recharge<br>Spare part ref.                 |
|------------------|---|--------------------------------------|--|
| 1                | Pack moteur<br>Motor pack   |                                      | HN2481/01  |
| 2                | Accessoires de chaudière<br>Boiler accessories                        | HN2481<br>HN2482<br>HN2483<br>HN2484 | HN2481/02<br>HN2482/02<br>HN2483/02<br>HN2484/02 |
| 3                | Pares fumée<br>Smoke deflectors                                       | HN2481<br>HN2482<br>HN2483<br>HN2484 | HN2481/03<br>HN2482/03<br>HN2483/03<br>HN2484/03 |
| 4                | Accessoires du chaudière<br>Tender accessories                        |                                      | HN2481/04  |
| 5                | Circuit imprimé principale avec attelage<br>Main PCB with coupler bar |                                      | HN2481/05  |
| 6                | Circuit imprimé de lumières avant<br>Frontal light PCB                |                                      | HN2481/06  |
| 7                | Circuit imprimé de lumières arrière<br>Rear light PCB                 |                                      | HN2481/07  |
| 8                | Essieux du bissel avant<br>Front pony wheel                           | HN2481<br>HN2482<br>HN2483<br>HN2484 | HN2481/08<br>HN2482/08<br>HN2483/08<br>HN2484/08 |
| 9                | Essieux du bissel arrière<br>Rear pony wheel                          | HN2481<br>HN2482<br>HN2483<br>HN2484 | HN2481/09<br>HN2482/09<br>HN2483/09<br>HN2484/09 |
| 10               | Bielles<br>Connecting rod   | HN2481<br>HN2482<br>HN2483<br>HN2484 | HN2481/10<br>HN2482/10<br>HN2483/10<br>HN2484/10 |
| 11               | Dessous de châssis<br>Frame bottom lid                                |                                      | HN2481/11  |
| 12               | Tampons et lampes<br>Buffers and lamps                                |                                      | HN2481/12  |
| 13               | Roues set et pignon<br>Wheel set and gears                            | HN2481<br>HN2482<br>HN2483<br>HN2484 | HN2481/13<br>HN2482/13<br>HN2483/13<br>HN2484/13 |
| 14               | Attelage<br>Coupler mechanism   |                                      | HN2481/14  |
| 15               | Bandage d'adhérence<br>Traction tyres                                 |                                      | HN2481/15  |
| 16               | Bogies du tender<br>Tender bogies                                     |                                      | HN2481/16  |



Enlever le décodeur factice pour monter le décodeur digital.  
Remove dummy plug to fit digital decoder.

**Pour ouvrir la carrosserie du tender:**

1. Retirez les vis inférieures.
2. Inclinez la carrosserie.
3. Détachez du châssis.



**To open the bodysell:**

1. Remove the lower screws.
2. Tilt the bodysell.
3. Detach from chassis.

